



EVALUATION BRIDGE #M1319
U S HIGHWAY 70B
GARLAND COUNTY
CONCRETE ARCH – DECK, CLOSED SPAN
DATE OF CONSTRUCTION – 1938
BUILDER - HOT SPRINGS NATIONAL PARK

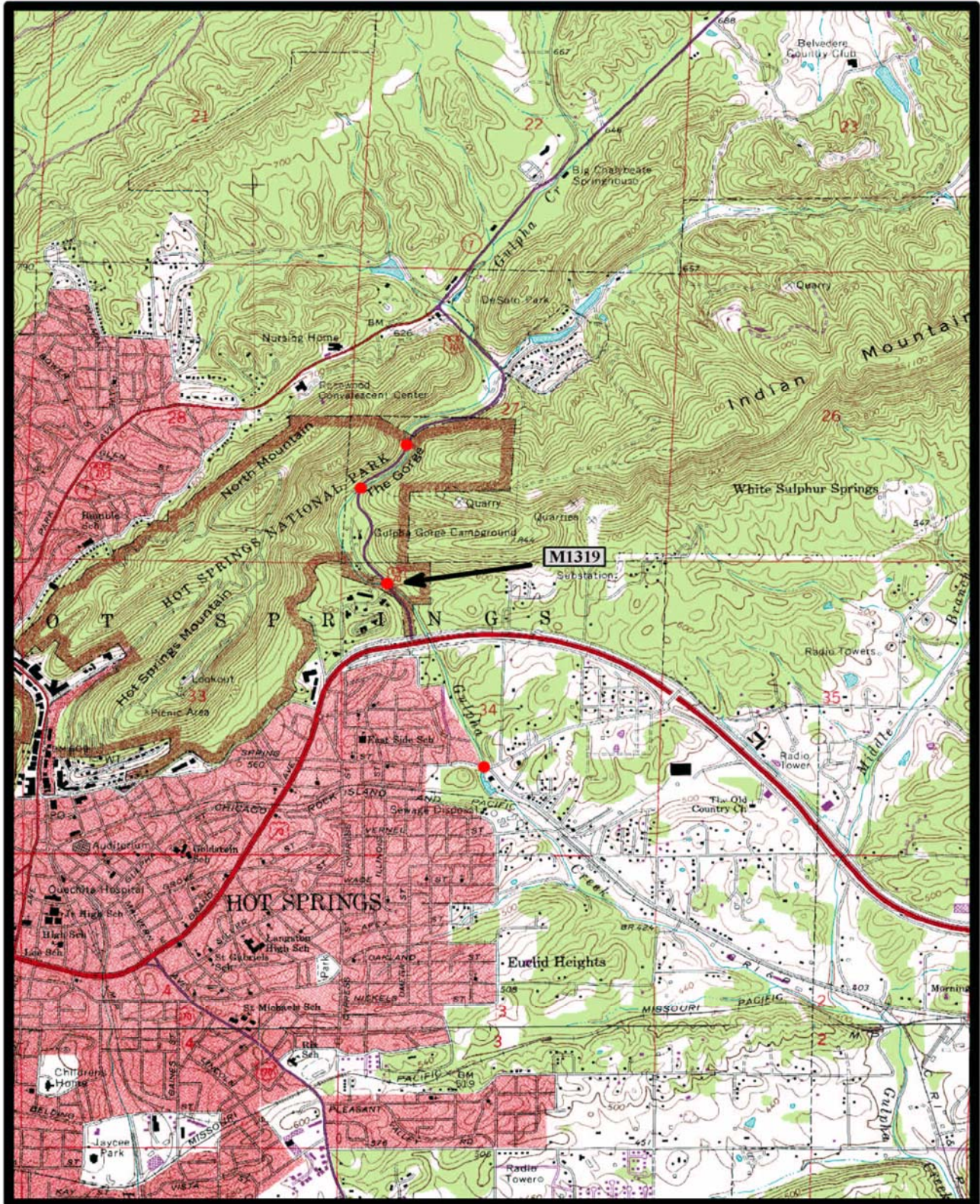


Evaluation Concrete_Arch_Bridges Properties

General Attributes

Name	Value
Bridge Number	M1319
Span_Type	Closed
Date_Built	1938
County	Garland
Road	US 70B
Crosses	West Gulpha Creek
Builder	Hot Springs National Park
Number_of_Spans	1
Span_Length	44
Deck_Width	27
Structure_Length	46
Skewed	False
Altered	False
Unique	
On_NR	False
Demolished	False
Photographed	True
Original_Job	
Replacement_Job	
Plans	False
In_GIS	True
Attribute1	53
Bridge_Number1	M1319
Pool_Reserve	No
Evaluation	Yes
Owner	State

Close

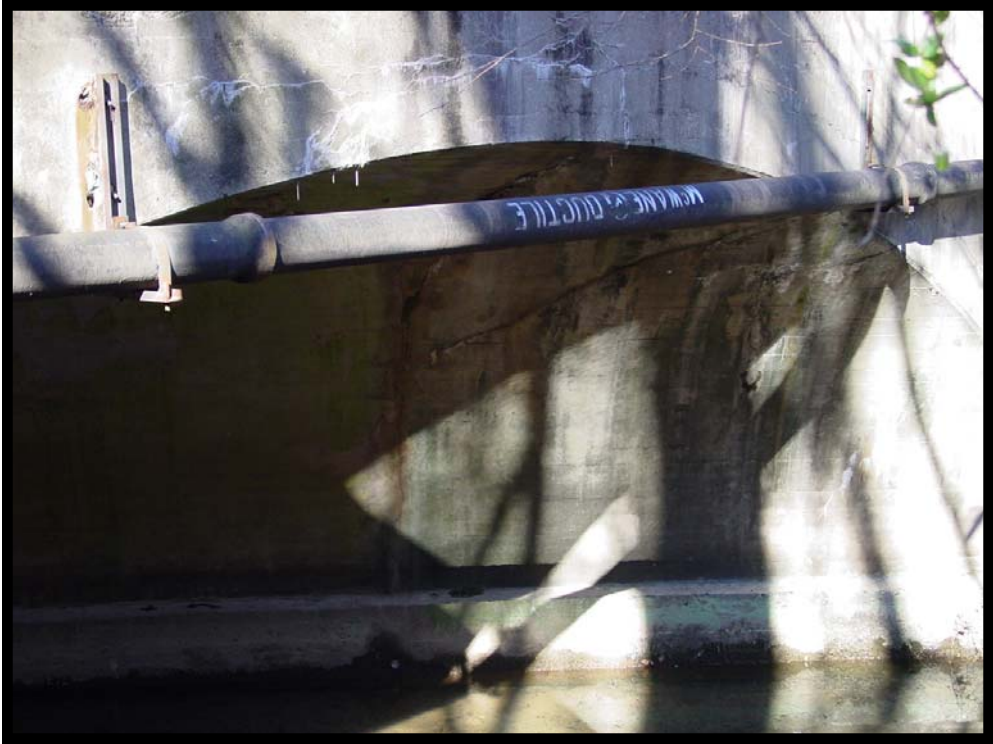


Hot Springs North & South 7.5 min. Quads

Notes



EVALUATION BRIDGE #M1320
U S HIGHWAY 70B
GARLAND COUNTY
CONCRETE ARCH – DECK, CLOSED SPAN
DATE OF CONSTRUCTION – 1938
BUILDER - HOT SPRINGS NATIONAL PARK

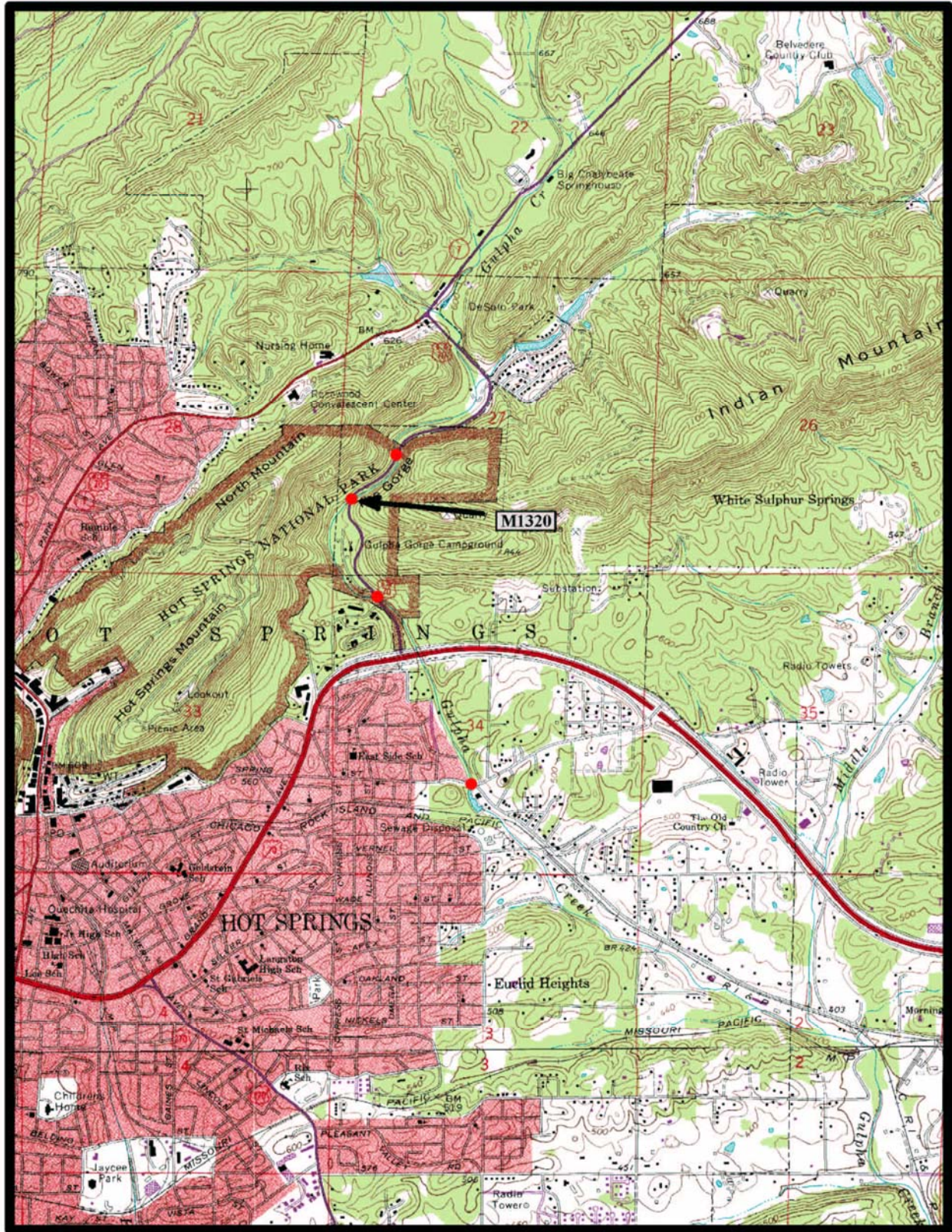


Evaluation Concrete_Arch_Bridges Properties [X]

General | **Attributes**

Name	Value
Bridge Number	M1320
Span_Type	Closed
Date_Built	1939
County	Garland
Road	US 70B
Crosses	West Gulpha Creek
Builder	Hot Springs National Park
Number_of_Spans	1
Span_Length	39
Deck_Width	28
Structure_Length	41
Skewed	True
Altered	False
Unique	
On_NR	False
Demolished	False
Photographed	False
Original_Job	
Replacement_Job	
Plans	False
In_GIS	True
Attribute1	52
Bridge_Number1	M1320
Pool_Reserve	No
Evaluation	Yes
Owner	State

Close



Hot Springs North & South 7.5 min. Quads

Notes



EVALUATION BRIDGE #M1321
U S HIGHWAY 70B
GARLAND COUNTY
CONCRETE ARCH – DECK, CLOSED SPAN
DATE OF CONSTRUCTION – 1938
BUILDER - HOT SPRINGS NATIONAL PARK

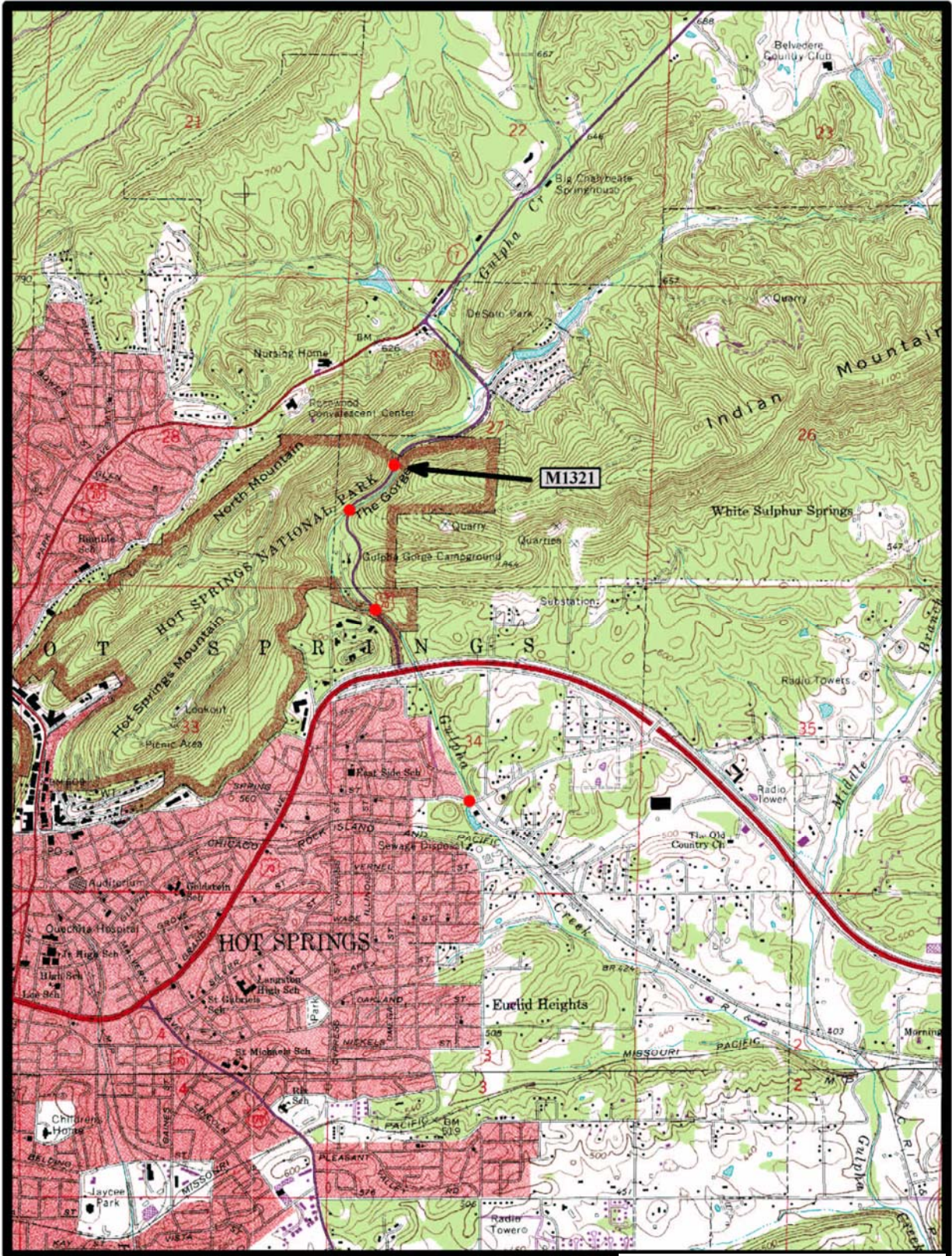


Evaluation Concrete_Arch_Bridges Properties [X]

General | **Attributes**

Name	Value
Bridge Number	M1321
Span_Type	Closed
Date_Built	1938
County	Garland
Road	US 70B
Crosses	Gulpha Creek
Builder	Hot Springs National Park
Number_of_Spans	1
Span_Length	39
Deck_Width	28
Structure_Length	41
Skewed	True
Altered	False
▶ Unique	
On_NR	False
Demolished	False
Photographed	True
Original_Job	
Replacement_Job	
Plans	False
In_GIS	True
Attribute1	51
Bridge_Number1	M1321
Pool_Reserve	No
Evaluation	Yes
Owner	State

Close



Hot Springs North & South 7.5 min. Quads

Notes



EVALUATION BRIDGE #M2202
STATE HIGHWAY 170
WASHINGTON COUNTY
CONCRETE ARCH – DECK, CLOSED SPAN
DATE OF CONSTRUCTION – 1923
BUILDER - LUTEN BRIDGE COMPANY

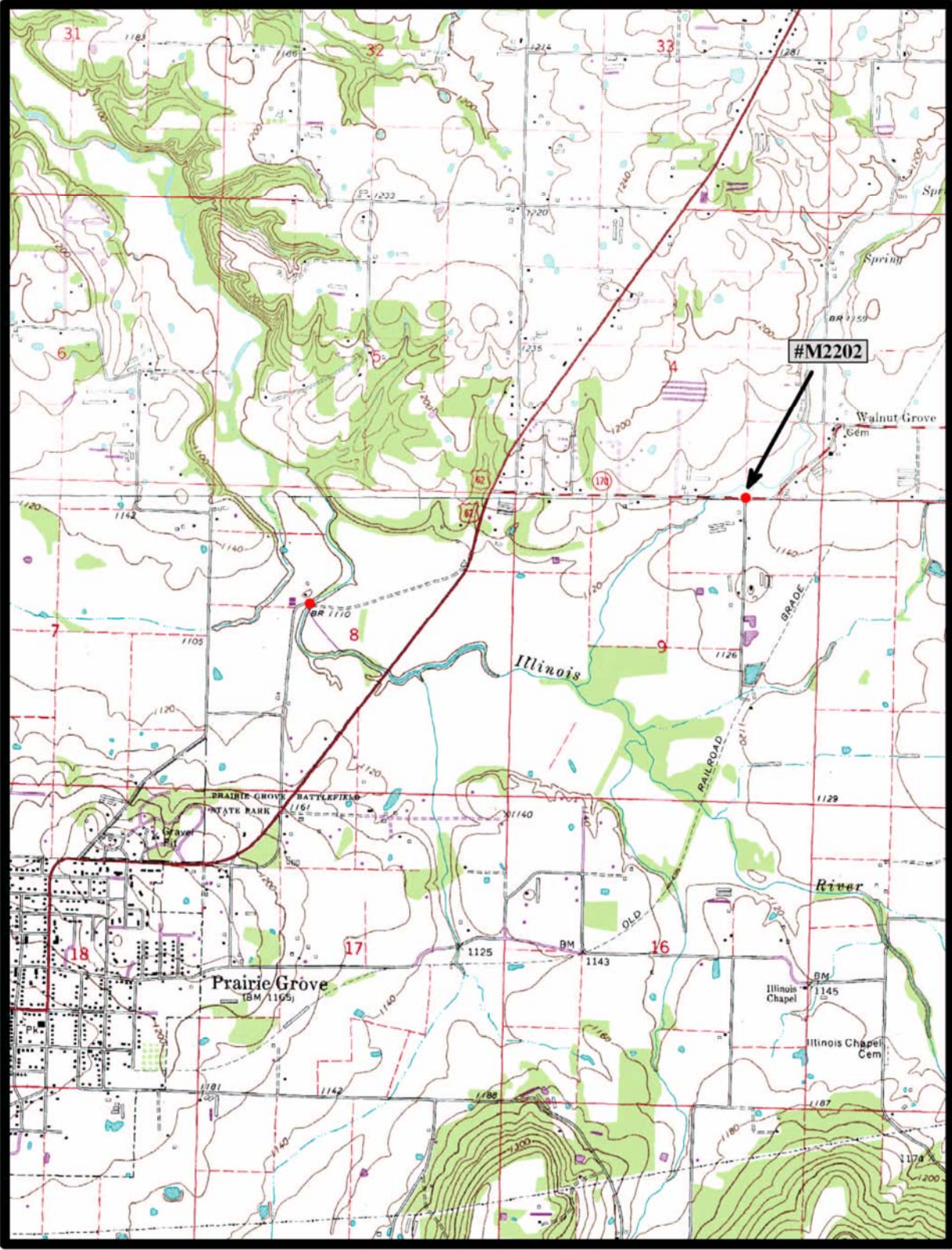


Evaluation Concrete_Arch_Bridges Properties

General Attributes

Name	Value
Bridge Number	M2202
Span_Type	Closed
Date_Built	1923
County	Washington
Road	SH 170
Crosses	Little Red River
Builder	Luten Bridge Company
Number_of_Spans	1
Span_Length	43
Deck_Width	15
Structure_Length	48
Skewed	True
Altered	False
Unique	Luten Concrete Arch
On_NR	False
Demolished	False
Photographed	True
Original_Job	
Replacement_Job	
Plans	False
In_GIS	True
Attribute1	6
Bridge_Number1	M2202
Pool_Reserve	No
Evaluation	Yes
Owner	State

Close



Prairie Grove. Wheeler 7.5 min. Quads

Notes